

HI-KALIBRE EQUIPMENT LTD.

VAS 1461

5810 45 AVE.
COMONFON, ALBERTA
T6E 5E5

PHONE: (780) 435-1111 FAX: (780) 435-5164

MANUFACTURER: HI-KALIBRE EQUIPMENT LTD.

Materials used in manufacturing XCEED BODY, SUB AND TOP CAP:

Meet or exceed the requirements of the American Petroleum Institute and the National Association of Corrosion Engineers Standard MR 01 75 LATEST EDITION N.A.C.E.

"Material Requirements" Sulfide Stress Cracking Resistant Metallic material for Oilfield Blowout Prevention Equipment, H2S TRIM.

CUSTOMER: VIKER RENTALS &

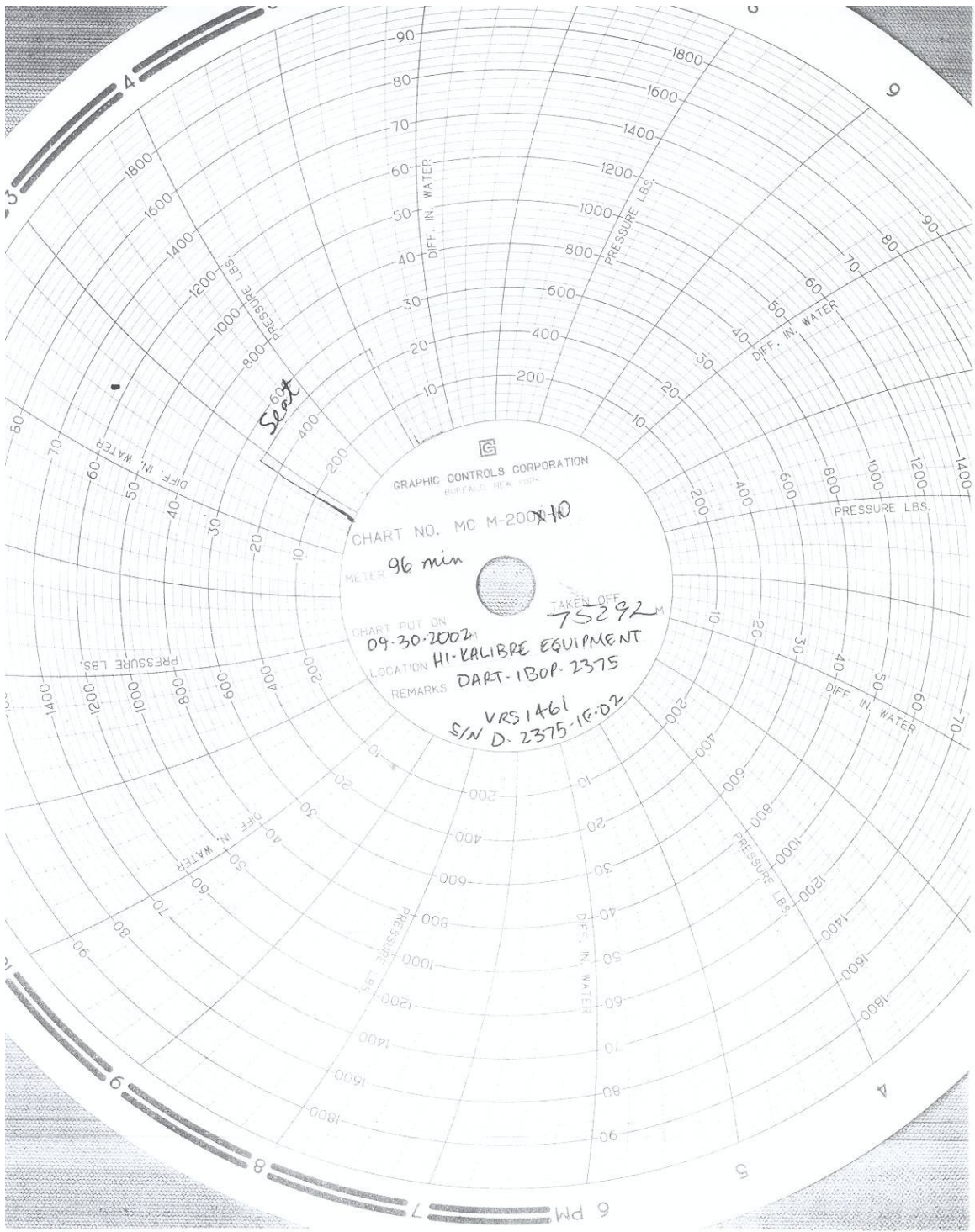
VALVE DESCRIPTION: 2-3/8" IF HI-KAL DART IBOP SM WP

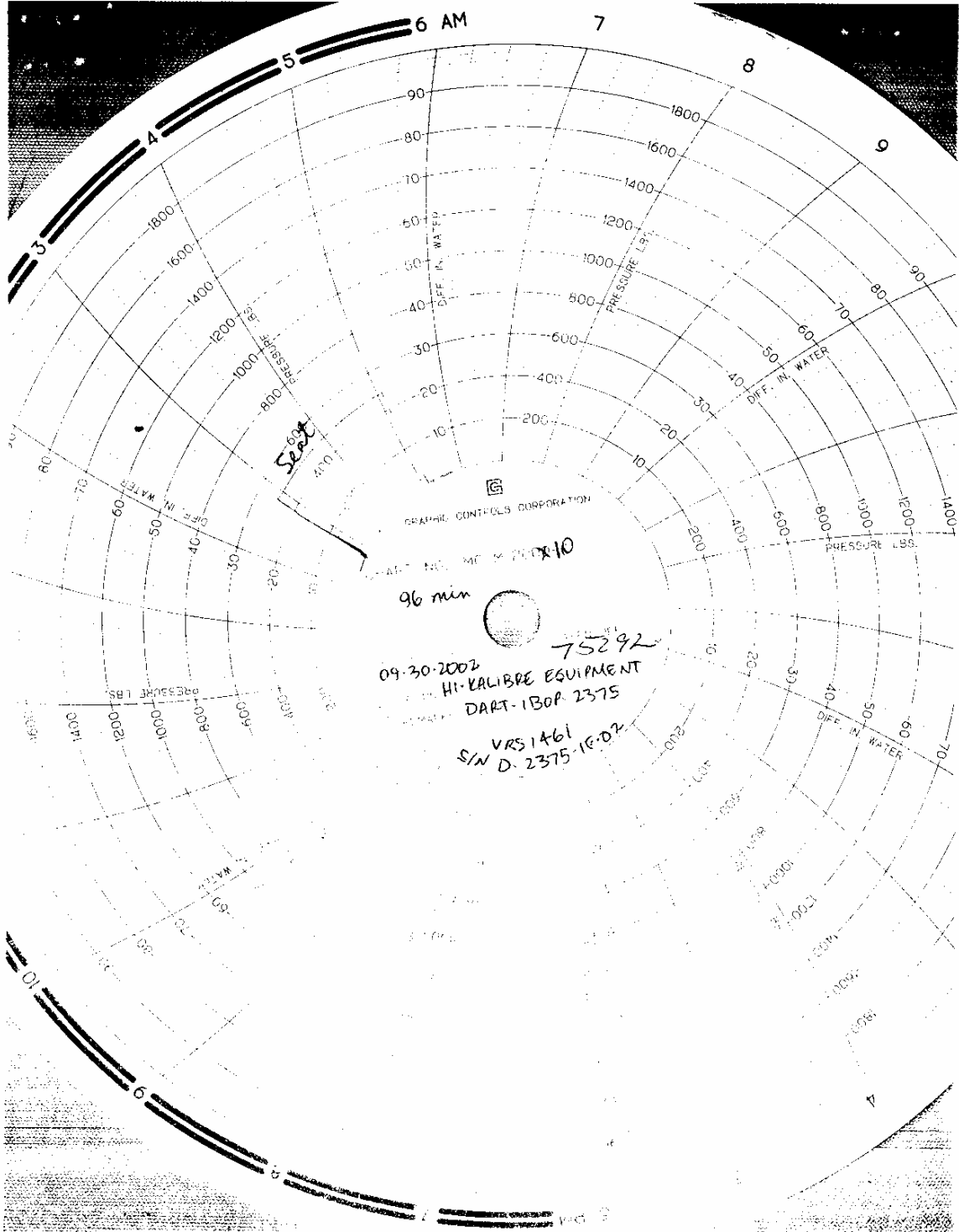
SERIAL #: D-2375-11 02
MANUFACTURING LOT #: 65085
KIT #:
SALES ORDER #: 74502
CUSTOMER PO #: GARNET
OWNER'S SERIAL #:
DATE OF MANUFACTURE: SEP 10, 2001

VALVE COMPONENTS	PART #	QTY
2-3/8" IF DART IBOP BODY 5000 WP	2375-01-11	53000-2
2-3/8" IF DART IBOP SUB 5000 WP	2375-02-11	53010-2
2-3/8" IF DART IBOP TOP CAP 5000 WP	2375-03-11	53011-02
2-3/8" IF DART IBOP DART GUIDE 5000 WP	2375-04-11	53012-000
2-3/8" IF DART IBOP MAIN DART BODY	2375-05-11	53013-000
4-1/2" DIR CK VALVE DART SEAL RETAINER	KI 4750-0-010	52500-000
HEX SOC CAP SCREW 1/4" X 3/4 LONG S.S.	RT 3750-0-014-0	0000-2309
2-3/8" IF DART IBOP SEALKIT 5000 WP	DART 2375-14	55000

Hi-Kalibre Equipment

Per Glen Rabby, President 5/M





GRAPHIC CONTROLS CORPORATION

96 min

09-30-2002
HI-CALIBRE EQUIPMENT
DART-130P 2375
S/N VRS 1461



Set

